

IMC Montan

Consulting Services to Mining Sector

ABOUT COMPANY

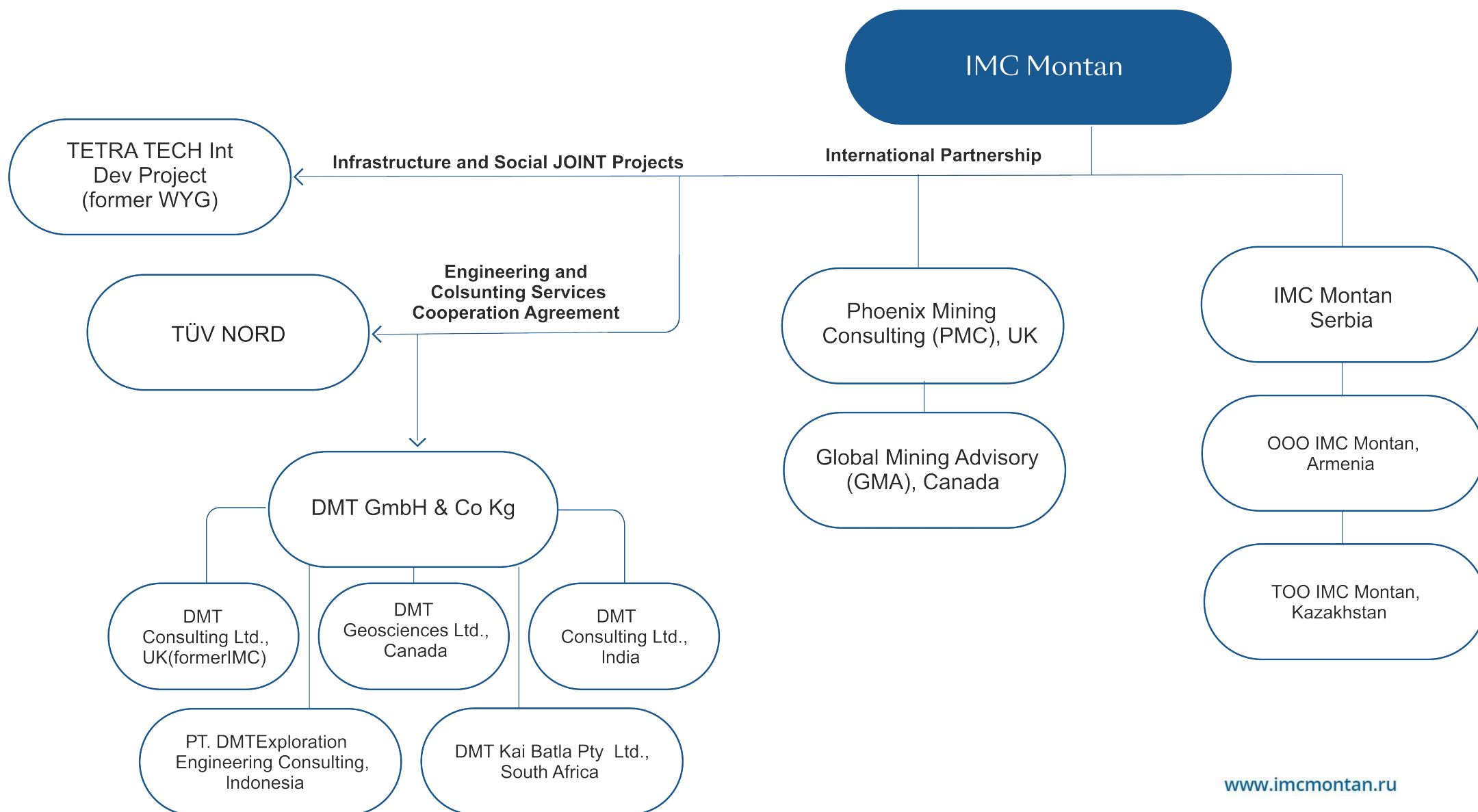
IMC Montan is an independent international consulting group providing services in such areas as mineral geology, mining, processing, mine infrastructure and other aspects related to mineral deposits

Area of activities: all solid minerals.

Main services: mine audit, engineering and technical consulting

The history of IMC Montan dates back to 1947 and is associated with development of the coal industry in the UK, and later of a range of almost all solid minerals worldwide. In 1992, with development of international consulting, the Group established an office in Moscow. For further IMC development in the early 2000s a consortium of DMT GmbH & Co Kg (Germany, dates back to 1737) and WYG International (UK, dates back to 1970, currently Tetra Tech Project International) was formed, and a single international brand IMC Montan was created. Both participants are major international engineering consultancies. Cooperation between international companies is based on Consortium principle.

GROUP STRUCTURE



COMPANY SERVICES

1. MINING AND GEOLOGICAL AUDIT

- **CPR, Resources and Reserves Valuation;**
- **Due Diligence, Conclusive Statements, Technical and Technology Audit, Design and Solutions Expert Review;**
- **Independent Technical Engineer's Report (LER, OER), Bankable FS;**
- **Engineering Support**

2. TECHNICAL AND ENGINEERING CONSULTING

- **T3O, FS, PFS, SS, Engineering Design in Association with GMC;**
- **3D Modelling and Optimisation;**
- **Exploration Quality Assurance and Quality Control (QA/QC);**
- **Industrial and Labour Safety, Geotechnical Studies in Association with DMT and design institutes;**
- **Preparation/Concentration and Metallurgy;**
- **Productivity Improvement;**
- **Environment and Restoration, Social Responsibility, ESIA.**

OUR TEAM

IMC Montan is proud to offer the following experts:

- **Mining Engineers**
- **Geologists, Hydrogeologists, Rock Mechanics Engineers**
- **Processing Engineers, Specialists in Processing and Concentration, Metallurgy**
- **Environmental Specialists**
- **Mining Economists**
- **Specialists in 3D Modelling and Optimisation**
- **Human Resources Specialists**
- **Infrastructure and Transport Specialists**
- **Industrial Safety and Ventilation Specialists**
- **Public-Private Partnership, Social and Economic Development Specialists**

A multi-discipline and international team of our experts guarantees use of the best practices in development of independent and professional solutions.

Experts include: international Competent Persons; experts of GKZ; experts of OERN (Society of Experts on Subsoil Use); members of Eurasian Union of Experts on Subsoil Use; experts of PONEN; members of the Academy of Mining Science; Professors; Doctors of Sciences and PhDs.

COMPETITIVE EDGE

- **Blending of international and local best practices of IMC Montan group of companies**
- **Best dynamic team of specialists (the main experts are given on our website)**
- **Knowledge of working environment specifics**
- **Close cooperation with design and research organizations**
- **Vast work experience with banks, financial auditors and asset valuation companies**
- **Recognition of IMC reports by financial institutions and banks**
- **World longest reference list of successful IPO projects**
- **Longest history of work in mining consultancy**

EXPERTISE SINCE 1992

- ✓ **Over 740 projects**
- ✓ **Over 50 Competent Person's Reports in CPR/MER format**
- ✓ **Consortium assignments completed by the Group in all mining countries and all types of solid minerals**
- ✓ **Participation in development of regulatory documents and work of international expert panels**
- ✓ **Over 200 Clients, including mining Holding companies, Banks, Investment companies**

OUR MAJOR CLIENTS / International Mining Companies

Angloamerican pic
ArcellorMittal
BHP Billiton pic
Cambrian Mining pic
China National Coal Development Corp.
Cleveland Potash Ltd.
Coal India Ltd.
Coeclerici
Cross Siberia Group
Det.AL Ltd.
Enel, OGK-5
Esso
Gecamines
Glencore International AG

KCC International, Inc.
Mitsui & Co. Ltd.
Power Fuel plc
Royal Dutch Shell plc
Samsung C&T Corporation
Sasol Ltd.
Sojitz Corp.
Smart Holding
Sumitomo Corporation
Tata Steel, Tata Power
Trans-Siberian Gold plc
Xstrata plc
YILDIRIM GROUP

OUR MAJOR CLIENTS/ Financial Institutions

Asian Development Bank
World Bank
Eurasian Development Bank
European Bank for Reconstruction and Development, EBRD
Canadian Imperial Bank of Commerce
International Finance Corporation
Renaissance Capital
Finasta
BNP Paribas
Deutsche Bank
Goldman Sachs
Investec Bank
Klesch & Co
Kreditanstalt für Wiederaufbau
N.M. Rothschild & Son Ltd.
New Russia Growth
SAFIN Handels Ltd.
Summa Capital
SBC Warburg
UniCredit Group

WORKING FOR YOUR SUCCESS!